

West Area Planning Committee Presentation

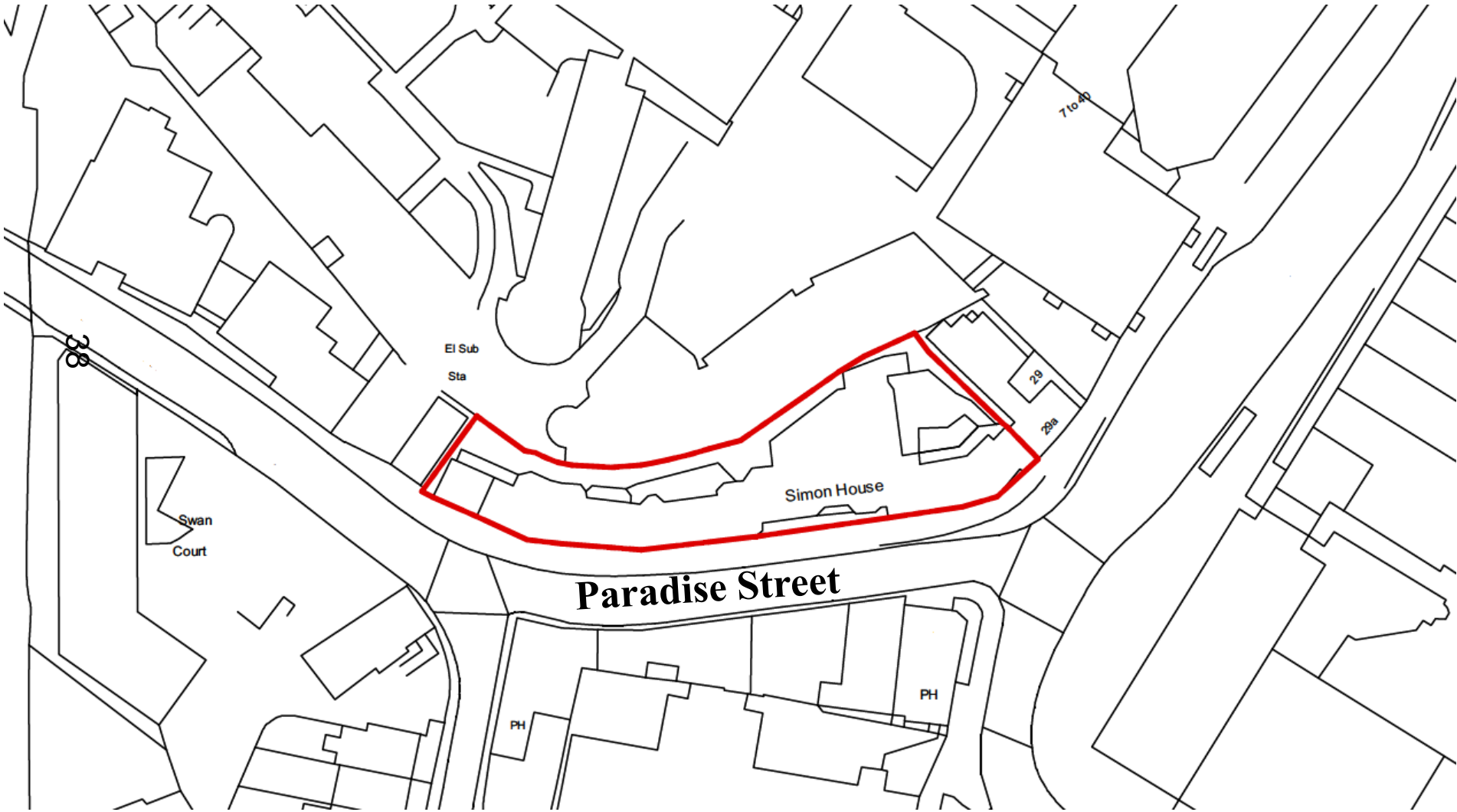
18/03370/FUL

**Simon House
1 - 5 Paradise Street
Oxford
Oxfordshire
OX1 1LD**

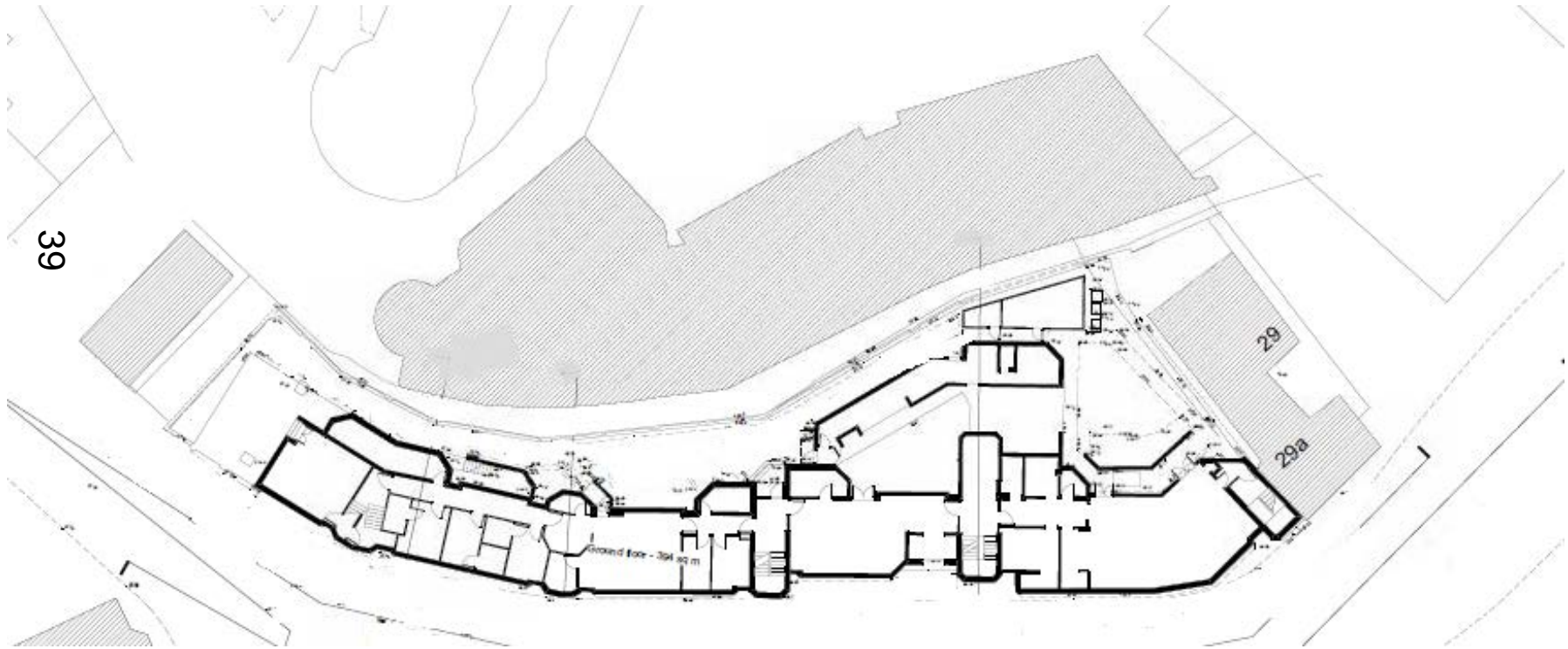
www.oxford.gov.uk



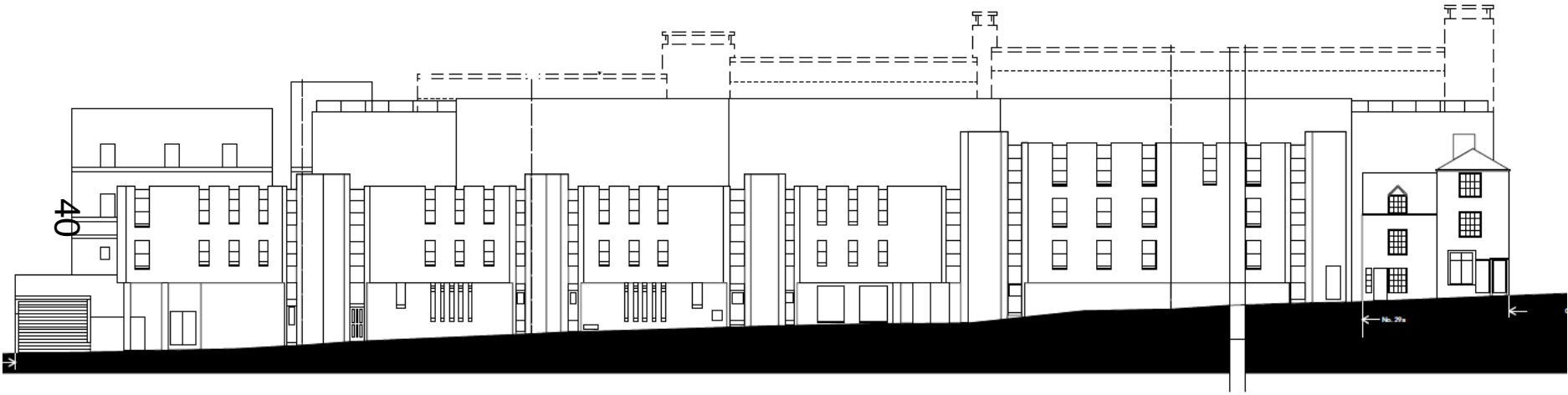
Site Location Plan



Existing Plan



Existing Paradise Street elevation



Proposed first floor plan



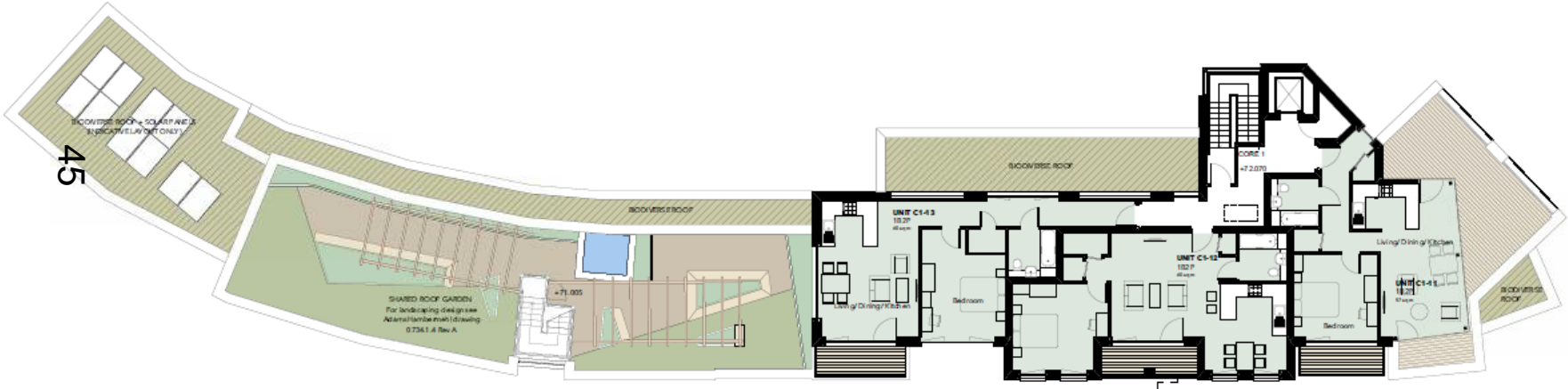
Proposed second floor plan



Proposed third floor plan



Proposed fourth floor plan



Proposed roof plan



Proposed front elevation



Proposed west elevation



Proposed east elevation



Proposed rear elevation



Landscape plan

51



Verified view from Castle Street



View 07 - Castle Street - See original AVR London Verified View Scoping Study

Verified view from inside the Westgate



53

V131302_001_Planview Drive_57110025

View 14 - Westgate Steps -See original AVR London Verified View Scoping Study

Verified view from Norfolk Street



54

View 08 - Norfolk Street - See original AVR London Verified View Scoping Study



Verified view from Paradise Square

55



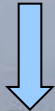
View 13 - Paradise Square - See original AVR London Verified View Scoping Study

**Verified view from
Raleigh Park**

56



Simon House



Verified View from Boars Hill



Verified view from St George's Tower



58

Verified view from Carfax Tower

59



Verified view from The Mound



09

Photos of the site – from the steps of Westgate

61



Photos of the site – view from Castle Street



Photos of the site – view from Paradise Square



**Photos of the site – from the garden
looking towards 29 and 29a Castle Street**

64



Photos of the site – looking at the prison wall from the garden of Simon House

65



**Photos of the site –
rear of Simon House**



Photos of the site – view looking towards the Westgate with the listed buildings opposite Simon House

67



PARADISE SOU

This page is intentionally left blank